

School Immunization Requirements

PHILADELPHIA KINDERGARTEN

The School District of Philadelphia requires that all children entering Philadelphia kindergarten receive the following vaccines before attending their first day of school. All doses must be given at the appropriate age and interval, talk to your doctor for more information. Proof of your child's shot record is needed to attend school so come prepared when you register.

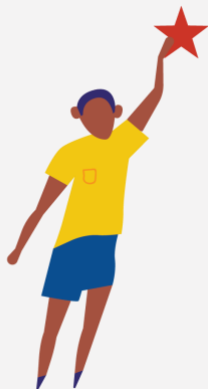


Diphtheria, Tetanus, & Acellular Pertussis (DTap)
4 doses



Polio (IPV)
4 doses

Measles, Mumps, and Rubella (MMR)
2 doses



Hepatitis B (Hep B)
3 doses

Chickenpox (Varicella)
2 doses

Don't have a doctor? **VISIT A CITY HEALTH CENTER**

Need vaccines for your child but you don't have a doctor? Visit a Philadelphia city health center! City health centers can give your child the vaccines they need to stay healthy and enter school.

Operated by the Department of Public Health, city health centers accept patients with no insurance, Medicaid, HMO plans, and most other insurance options. Walk-in to any of the centers listed below for more information, or call (215) 685-2933 to schedule a vaccine appointment.

Need proof of a vaccine that was already given? Call the Immunization Hotline at (215) 685-6784, 9:00 am to 5:00 pm, Monday through Friday.

Philadelphia City Health Centers

Health Center 2

1700 S. Broad St., Unit 201, Philadelphia, PA 19145 (215) 685-1803

Health Center 3

555 S. 43rd St., Philadelphia, PA 19104 (215) 685-7504

Health Center 4

4400 Haverford Ave., Philadelphia, PA 19104 (215) 685-7601

Health Center 5

1900 N 20th St., Philadelphia, PA 19121 (215) 685-2933

Health Center 6

301 W. Girard Ave., Philadelphia, PA 19123 (215) 685-3803

Health Center 9

131 E. Chelton Ave., Philadelphia, PA 19144 (215) 685-5701

Health Center 10

2230 Cottman Ave., Philadelphia, PA 19149 (215) 685-0639

Health Center 12 (Strawberry Mansion)

2840 West Dauphin St., Philadelphia, PA 19132 (215) 685-2401

